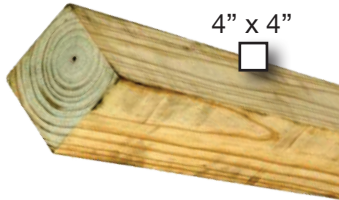
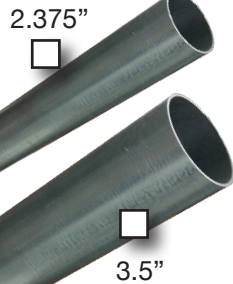


STEP 2 Pick Your Stiffener

Choose from 2.375" or 3.5" Internal Support (depending on the local building codes for load and uplift), or choose a 4x4 Wood* insert (not supplied by Homeland).



Internal Support	Axial Load*	Uplift Load
2.375"	6,000 lbs.	1,350 lbs.
3.5"	13,500 lbs.	2,600 lbs.

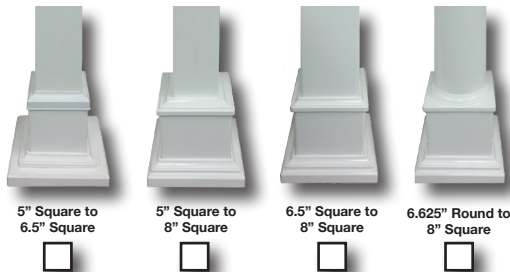
Axial Loads include* 2.5x factor of safety.

* Wood inserts have not been tested by Homeland Vinyl Products, Inc. for load or wind uplift.

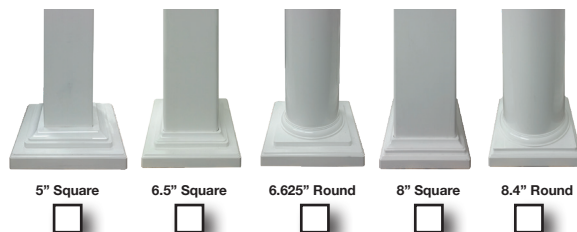
STEP 3 Pick Your Accessory

Choose your accessories.

Transition:



Trim:



Not all Vinyl Is Created Equal!

Homeland® manufactures the toughest PVC profiles with the most advanced UV protection under the sun, our ACCU-Shield® formulation.

ACCU-Shield is our protective outer layer engineered to significantly reduce oxidation and the damaging effects of the sun's ultraviolet rays. Even in harsh climates, ACCU-Shield protects the color and sheen of our products for a longer period of time. Simply put, there is no better protection under the sun than ACCU-Shield.

Don't forget accessories...

Homeland® and Waymark® work hand in hand to design our products to work as a **system**, from our precision fit designs to our color matching. Homeland and Waymark are "the perfect match"!



Fencing: Post Caps, Low Voltage Lighting, Solar Lighting, Rotating Pickets, Fashion Pickets, Brackets and more.

Decking: Lighting Strips, Flush Mount lighting and more.

Railing: Post Caps, Low Voltage Lighting, Solar Lighting, Rail Brackets, Sconces, Secondary Hand Rails and more.

Homeland and Waymark:

Perfect fit and color matched!



WaymarkProducts.com
877-652-6118

The Rest of the Gorilla® Family

• Gorilla Deck® • Gorilla® Column/Posts • Gorilla® Wrap
Find out more @ HomelandVinyl.com

For more information, please contact:



Toll Free: 800-999-6813
www.homelandvinyl.com

M1099 rev_E
2019-200

WWW.HOMELANDVINYL.COM

IT ALL BEGINS WITH THE



FULLY CUSTOMIZABLE COLUMN AND POST SYSTEMS

HOMELAND
VINYL PRODUCTS, INC.

Toll Free: 800-999-6813
www.HomelandVinyl.com

Easy Distribution!



It all begins with the Gorilla® Matrix Mounting Plate. Then, it's as easy as 1, 2, 3! Simply Pick the Columns/Posts, pick the Stiffener, then choose the Accessories.

Each Column/Post assembly needs a Matrix Mounting Plate kit, which includes 2 Matrix mounting plates, 2 bushings for Internal supports, 2 Universal Base Trims and Hardware Assembly Pack. Mounting Hardware not included. Check local building code for mounting requirements.

STEP 1 Pick Your Column or Post

Choose from the column and post sizes below.

5" Post



6.625" Post



6.5" Post



8.4" Post



8" Post



Individually Packaged: Choose What You Need

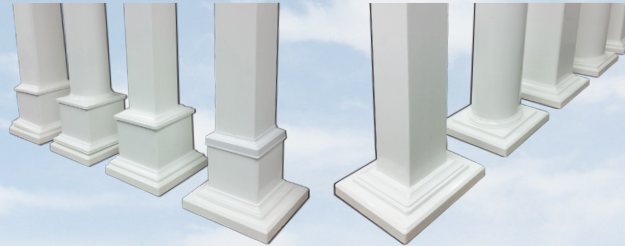
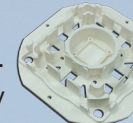


Buy for a single job, or for many at once. Because each component is individually packaged, there will be little to no waste.

Transition sizes may vary from job to job due to personal preference. To create transitions, choose the column/post size and cut to length right on the job site. With the Matrix Mounting plate, you can build up to 9 Column/Post combinations!

We do not offer pre-cut transitions.

See full instructions at www.homelandvinyl.com.



It All Begins With The



Hardware Assembly pack includes:

- (8) 1-1/2" #12 hex-head self-drilling screws
- (8) 3/4" #14 Phillips-head sheet metal screws
- (8) 1" #10 Phillips-head self-drilling screws



Mounting hardware not included. Check with local building code for mounting requirements.